



Fairy Tux

Typical Applications

The **Fairy Tux** is Linux Automation's switching cabinet top-hat rail Linux controller that meets all your wishes.

It contains a STM32MP153, 512 MB RAM and 16 GB eMMC. Power is provided by either PoE (802.11af) or a 12 .. 24 V wide range input.

It provides CAN and RS485 interfaces, as well as a dual-role USB port. This way it is perfectly suited as a gateway between a local bus or device and the network.

Depending on your needs two software options are available: The Debian image makes development especially easy. The Yocto BSP is well suited for fleets of devices.

The small form factor (2 TE) makes it well suited for small or crowded distribution cabinets.

Typical Use Cases

- **CAN or RS485 gateway**
Makes bridging legacy devices to modern networks possible.
- **USB extender**
Makes it possible to make USB-only devices usable over the network.
- **Home- or Industrial Automation**
Use the Fairy Tux as a building block for your automation solution.



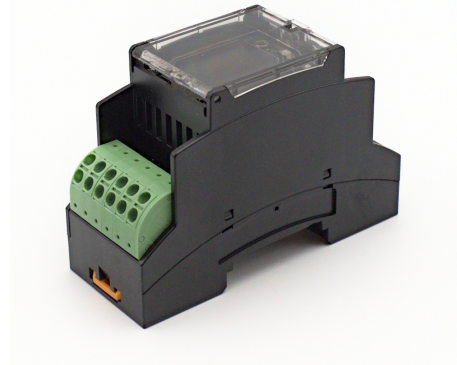
Fairy Tux

Interfaces

- **Gigabit Ethernet**
- **USB-C dual-role port**
- **1x CAN-FD**
(Push-in connector)
- **1x RS485**
(Push-in connector)
- **Power Supply:**
Two options available:
 - PoE (802.11af)
 - 12 .. 24 V wide range input (Push-in connector)
- **1.3" color LCD with two user-buttons**
- **Debug Serial**

Additional Features

- Yocto-based BSP with the RAUC updater pre-integrated available.
- Image containing Debian available.
- I2C and GPIOs for rapid prototyping



Fairy Tux

Technical Data

CPU:	STM32MP153, 2x Cortex-A7 @ 650 MHz
Coprocessor:	Cortex-M4 (part of STM32MP15x)
Storage:	16 GiB eMMC A/B system partitions for updates Over 8 GB of storage available
RAM:	512 MiB
Power Supply	PoE 802.11af or 12 .. 24 V

Customization Services

In case the Fairy Tux does not fully fit your needs we provide customized hardware and software solutions based on our existing ecosystem.

Integration and Development Services

With our partner Pengutronix we provide comprehensive services: We can help with integration of the Fairy Tux into your embedded application.